

HISTORIC AND DESIGN REVIEW COMMISSION

December 01, 2021

HDRC CASE NO: 2021-595
ADDRESS: 320 CEDAR ST
LEGAL DESCRIPTION: NCB 2963 BLK 11 LOT A16
ZONING: RM-4, H
CITY COUNCIL DIST.: 1
DISTRICT: King William Historic District
LANDMARK: Individual Landmark
APPLICANT: Chris Coker
OWNER: Chris Coker
TYPE OF WORK: Exterior alterations
APPLICATION RECEIVED: November 15, 2021
60-DAY REVIEW: Not applicable due to City Council Emergency Orders
CASE MANAGER: Rachel Rettaliata

REQUEST:

The applicant is requesting a Certificate of Appropriateness for approval to remove two (2) front doors and install wood windows.

APPLICABLE CITATIONS:

Historic Design Guidelines, Chapter 2, Exterior Maintenance and Alterations

1. Materials: Woodwork

A. MAINTENANCE (PRESERVATION)

- i. *Inspections*—Conduct semi-annual inspections of all exterior wood elements to verify condition and determine maintenance needs.
- ii. *Cleaning*—Clean exterior surfaces annually with mild household cleaners and water. Avoid using high pressure power washing and any abrasive cleaning or stripping methods that can damage the historic wood siding and detailing.
- iii. *Paint preparation*—Remove peeling, flaking, or failing paint surfaces from historic woodwork using the gentlest means possible to protect the integrity of the historic wood surface. Acceptable methods for paint removal include scraping and sanding, thermal removal, and when necessary, mild chemical strippers. Sand blasting and water blasting should never be used to remove paint from any surface. Sand only to the next sound level of paint, not all the way to the wood, and address any moisture and deterioration issues before repainting.
- iv. *Repainting*—Paint once the surface is clean and dry using a paint type that will adhere to the surface properly. See *General Paint Type Recommendations* in Preservation Brief #10 listed under Additional Resources for more information.
- v. *Repair*—Repair deteriorated areas or refasten loose elements with an exterior wood filler, epoxy, or glue.

B. ALTERATIONS (REHABILITATION, RESTORATION, AND RECONSTRUCTION)

- i. *Facade materials*—Avoid removing materials that are in good condition or that can be repaired in place. Consider exposing original wood siding if it is currently covered with vinyl or aluminum siding, stucco, or other materials that have not achieved historic significance.
- ii. *Materials*—Use in-kind materials when possible or materials similar in size, scale, and character when exterior woodwork is beyond repair. Ensure replacement siding is installed to match the original pattern, including exposures. Do not introduce modern materials that can accelerate and hide deterioration of historic materials. Hardiboard and other cementitious materials are not recommended.
- iii. *Replacement elements*—Replace wood elements in-kind as a replacement for existing wood siding, matching in profile, dimensions, material, and finish, when beyond repair.

6. Architectural Features: Doors, Windows, and Screens

A. MAINTENANCE (PRESERVATION)

- i. *Openings*—Preserve existing window and door openings. Avoid enlarging or diminishing to fit stock sizes or air conditioning units. Avoid filling in historic door or window openings. Avoid creating new primary entrances or window openings on the primary façade or where visible from the public right-of-way.
- ii. *Doors*—Preserve historic doors including hardware, fanlights, sidelights, pilasters, and entablatures.
- iii. *Windows*—Preserve historic windows. When glass is broken, the color and clarity of replacement glass should match the original historic glass.
- iv. *Screens and shutters*—Preserve historic window screens and shutters.
- v. *Storm windows*—Install full-view storm windows on the interior of windows for improved energy efficiency. Storm window may be installed on the exterior so long as the visual impact is minimal and original architectural details are not obscured.

B. ALTERATIONS (REHABILITATION, RESTORATION, AND RECONSTRUCTION)

- i. *Doors*—Replace doors, hardware, fanlight, sidelights, pilasters, and entablatures in-kind when possible and when deteriorated beyond repair. When in-kind replacement is not feasible, ensure features match the size, material, and profile of the historic element.
- ii. *New entrances*—Ensure that new entrances, when necessary to comply with other regulations, are compatible in size, scale, shape, proportion, material, and massing with historic entrances.
- iii. *Glazed area*—Avoid installing interior floors or suspended ceilings that block the glazed area of historic windows.
- iv. *Window design*—Install new windows to match the historic or existing windows in terms of size, type, configuration, material, form, appearance, and detail when original windows are deteriorated beyond repair.
- v. *Muntins*—Use the exterior muntin pattern, profile, and size appropriate for the historic building when replacement windows are necessary. Do not use internal muntins sandwiched between layers of glass.
- vi. *Replacement glass*—Use clear glass when replacement glass is necessary. Do not use tinted glass, reflective glass, opaque glass, and other non-traditional glass types unless it was used historically. When established by the architectural style of the building, patterned, leaded, or colored glass can be used.
- vii. *Non-historic windows*—Replace non-historic incompatible windows with windows that are typical of the architectural style of the building.
- viii. *Security bars*—Install security bars only on the interior of windows and doors.
- ix. *Screens*—Utilize wood screen window frames matching in profile, size, and design of those historically found when the existing screens are deteriorated beyond repair. Ensure that the tint of replacement screens closely matches the original screens or those used historically.
- x. *Shutters*—Incorporate shutters only where they existed historically and where appropriate to the architectural style of the house. Shutters should match the height and width of the opening and be mounted to be operational or appear to be operational. Do not mount shutters directly onto any historic wall material.

7. Architectural Features: Porches, Balconies, and Porte-Cocheres

A. MAINTENANCE (PRESERVATION)

- i. *Existing porches, balconies, and porte-cocheres*—Preserve porches, balconies, and porte-cocheres. Do not add new porches, balconies, or porte-cocheres where not historically present.
- ii. *Balusters*—Preserve existing balusters. When replacement is necessary, replace in-kind when possible or with balusters that match the originals in terms of materials, spacing, profile, dimension, finish, and height of the railing.
- iii. *Floors*—Preserve original wood or concrete porch floors. Do not cover original porch floors of wood or concrete with carpet, tile, or other materials unless they were used historically.

B. ALTERATIONS (REHABILITATION, RESTORATION, AND RECONSTRUCTION)

- i. *Front porches*—Refrain from enclosing front porches. Approved screen panels should be simple in design as to not change the character of the structure or the historic fabric.
- ii. *Side and rear porches*—Refrain from enclosing side and rear porches, particularly when connected to the main porch or balcony. Original architectural details should not be obscured by any screening or enclosure materials. Alterations to side and rear porches should result in a space that functions, and is visually interpreted as, a porch.
- iii. *Replacement*—Replace in-kind porches, balconies, porte-cocheres, and related elements, such as ceilings, floors, and columns, when such features are deteriorated beyond repair. When in-kind replacement is not feasible, the design should be compatible in scale, massing, and detail while materials should match in color, texture, dimensions, and finish.
- iv. *Adding elements*—Design replacement elements, such as stairs, to be simple so as to not distract from the historic character of the building. Do not add new elements and details that create a false historic appearance.

v. *Reconstruction*—Reconstruct porches, balconies, and porte-cocheres based on accurate evidence of the original, such as photographs. If no such evidence exists, the design should be based on the architectural style of the building and historic patterns.

Standard Specifications for Original Wood Window Replacement

- SCOPE OF REPAIR: When individual elements such as sills, muntins, rails, sashes, or glazing has deteriorated, every effort should be made to repair or reconstruct that individual element prior to consideration of wholesale replacement. For instance, applicant should replace individual sashes within the window system in lieu of full replacement with a new window unit.
- MISSING OR PREVIOUSLY-REPLACED WINDOWS: Where original windows are found to be missing or previously-replaced with a nonconforming window product by a previous owner, an alternative material to wood may be considered when the proposed replacement product is more consistent with the Historic Design Guidelines in terms of overall appearance. Such determination shall be made on a case-by-case basis by OHP and/or the HDRC. Whole window systems should match the size of historic windows on property unless otherwise approved.
- MATERIAL: If full window replacement is approved, the new windows must feature primed and painted wood exterior finish. Clad, composition, or non-wood options are not allowed unless explicitly approved by the commission.
- SASH: Meeting rails must be no taller than 1.25". Stiles must be no wider than 2.25". Top and bottom sashes must be equal in size unless otherwise approved.
- DEPTH: There should be a minimum of 2" in depth between the front face of the window trim and the front face of the top window sash. This must be accomplished by recessing the window sufficiently within the opening or with the installation of additional window trim to add thickness.
- TRIM: Original trim details and sills should be retained or repaired in kind. If approved, new window trim must feature traditional dimensions and architecturally appropriate casing and sloped sill detail. Window track components such as jamb liners must be painted to match the window trim or concealed by a wood window screen set within the opening.
- GLAZING: Replacement windows should feature clear glass. Low-e or reflective coatings are not recommended for replacements. The glazing should not feature faux divided lights with an interior grille. If approved to match a historic window configuration, the window should feature real exterior muntins.
- COLOR: Replacement windows should feature a painted finished. If a clad product is approved, white or metallic manufacturer's color is not allowed, and color selection must be presented to staff.
- INSTALLATION: Replacement windows should be supplied in a block frame and exclude nailing fins. Window opening sizes should not be altered to accommodate stock sizes prior to approval.
- FINAL APPROVAL: If the proposed window does not meet the aforementioned stipulations, then the applicant must submit updated window specifications to staff for review, prior to purchase and installation. For more assistance, the applicant may request the window supplier to coordinate with staff directly for verification.

FINDINGS:

- a. The primary structure at 320 Cedar is a 2 ½ - story, multi-family structure constructed circa 1910 in the Queen Anne style. The property first appears on the 1912 Sanborn Maps addressed as 326 Cedar. The structure features a metal hip roof with a projecting side gable, front gable detail, and dormer windows. Additionally, the structure features wood cladding, one-over-one windows, a 2-story front porch supported by Corinthian columns, and three (3) entry doors on the first floor of the front façade. The property is contributing to the King William Historic District.
- b. FENESTRATION MODIFICATION – The applicant has proposed to replace 2 of the three (3) entry doors on the first floor of the front façade with one-over-one windows. The structure first appears on the 1912 Sanborn Maps addressed as 326 Cedar in the same footprint. The Sanborn Maps shows evidence of the front bay projection and the two doors proposed for replacement may be original to the structure. According to Guideline 6.A.i for Exterior Maintenance and Alterations, existing window and door openings should be preserved. Avoid enlarging or diminishing to fit stock sizes or air conditioning units. Avoid filling in historic door or window openings. Avoid creating new primary entrances or window openings on the primary façade or where visible from the public right-of-way. Staff finds the proposal inconsistent with the Guidelines.
- c. NEW WINDOWS: SIZE AND PROPORTION – The applicant has proposed to replace two of the existing entry doors with one-over-one windows featuring traditional proportions. Staff's standard window specifications

state that new windows should feature traditional dimensions and proportions as found within the district. Staff finds the proposed window size and proportion consistent with the Guidelines.

- d. NEW WINDOWS AND DOORS: MATERIALS – At this time, the applicant has not provided information regarding window materials. If the HDRC approves the replacement of the existing doors with windows, staff finds wood windows to be most appropriate. Windows should feature an inset of two (2) inches within facades and should feature profiles that are found historically within the immediate vicinity. An alternative window material may be proposed, provided that the window features meeting rails that are no taller than 1.25” and stiles no wider than 2.25”. White manufacturer’s color is not allowed, and color selection must be presented to staff. There should be a minimum of two inches in depth between the front face of the window trim and the front face of the top window sash. This must be accomplished by recessing the window sufficiently within the opening or with the installation of additional window trim to add thickness. Window trim must feature traditional dimensions and an architecturally appropriate sill detail. Window track components must be painted to match the window trim or be concealed by a wood window screen set within the opening.

RECOMMENDATION:

Staff does not recommend approval based on findings a through d.

If the HDRC is compelled to approve the proposed fenestration modification, staff recommends the following stipulations:

- i. That the applicant salvages the existing entry doors and stores the doors on the property for future use.
- ii. That the applicant submits material specifications for fully wood windows to staff for review and approval prior to the issuance of a Certificate of Appropriateness. The windows should feature an inset of two (2) inches within facades and should feature profiles that are found historically within the immediate vicinity. Meeting rails must be no taller than 1.25” and stiles no wider than 2.25”. White manufacturer’s color is not allowed, and color selection must be presented to staff. There should be a minimum of two inches in depth between the front face of the window trim and the front face of the top window sash. This must be accomplished by recessing the window sufficiently within the opening or with the installation of additional window trim to add thickness. Window trim must feature traditional dimensions and architecturally appropriate sill detail. Window track components must be painted to match the window trim or concealed by a wood window screen set within the opening.

City of San Antonio One Stop

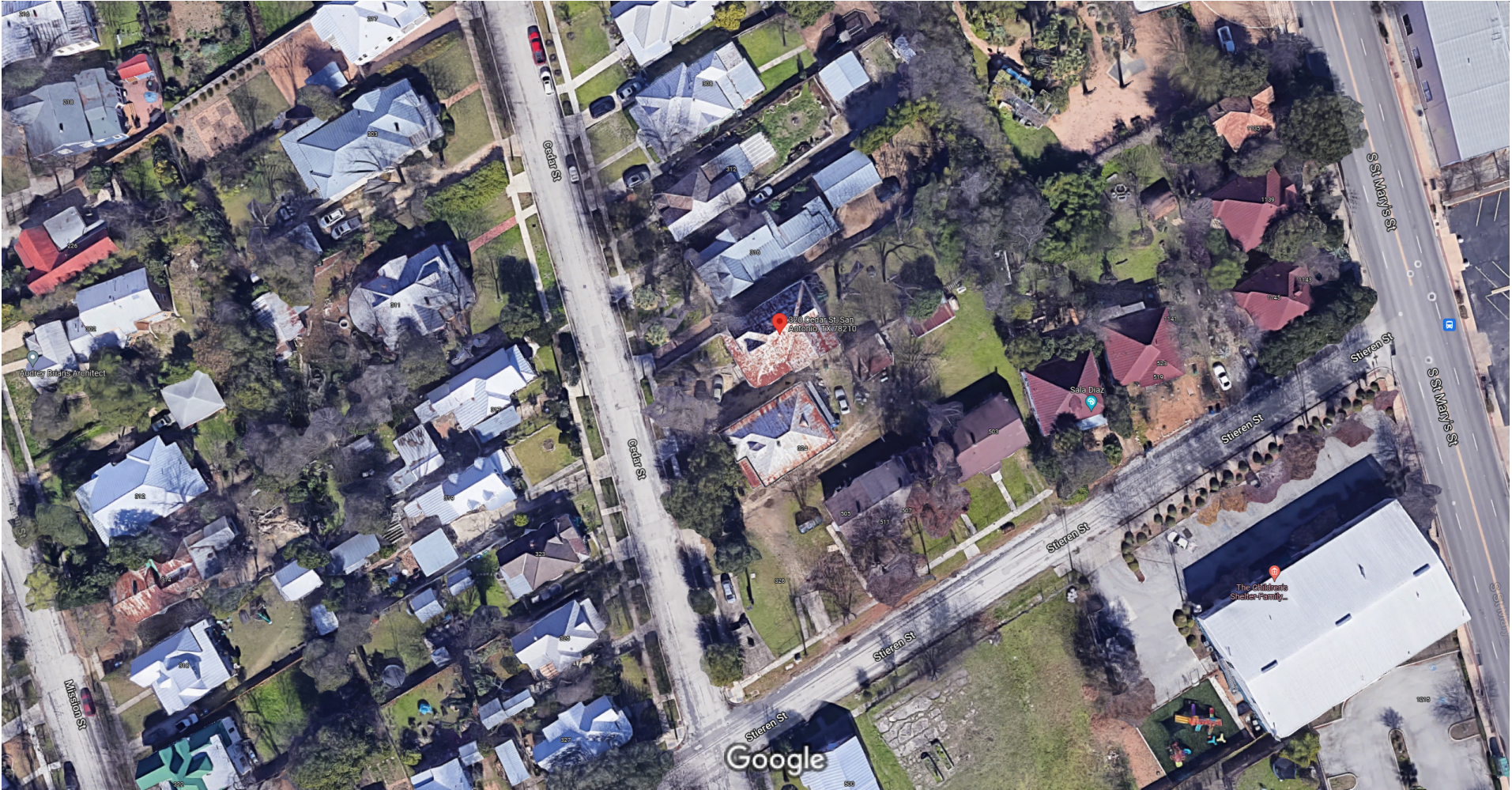


November 22, 2021

— User drawn lines

1:1,000
0 0.0075 0.015 0.03 mi
0 0.0125 0.025 0.05 km

Google Maps 320 Cedar St



Imagery ©2021 Google, Map data ©2021 Google 20 ft

Google Maps 320 Cedar St



Imagery ©2021 Google, Map data ©2021 Google 20 ft

Google Maps 320 Cedar St



Imagery ©2021 Google, Map data ©2021 Google 20 ft

Google Maps 320 Cedar St



Imagery ©2021 Google, Map data ©2021 Google 20 ft

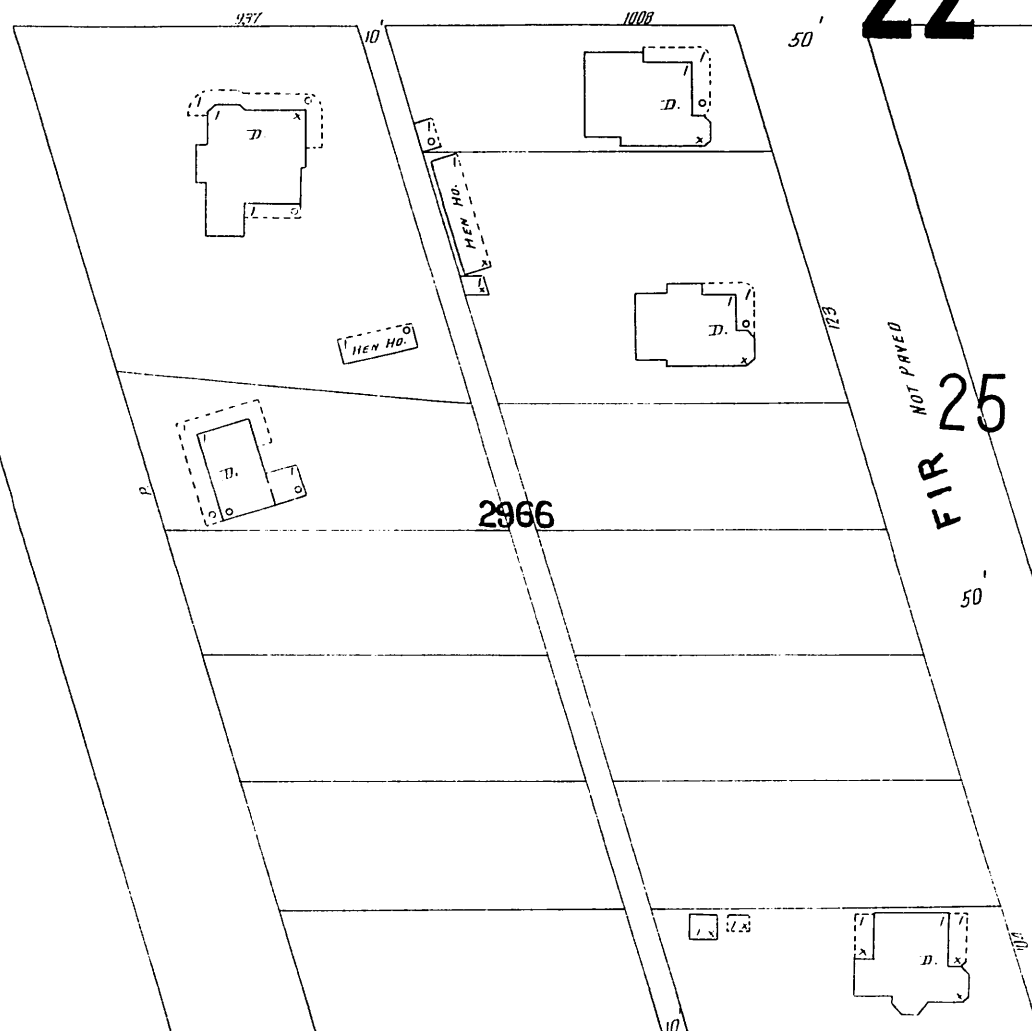
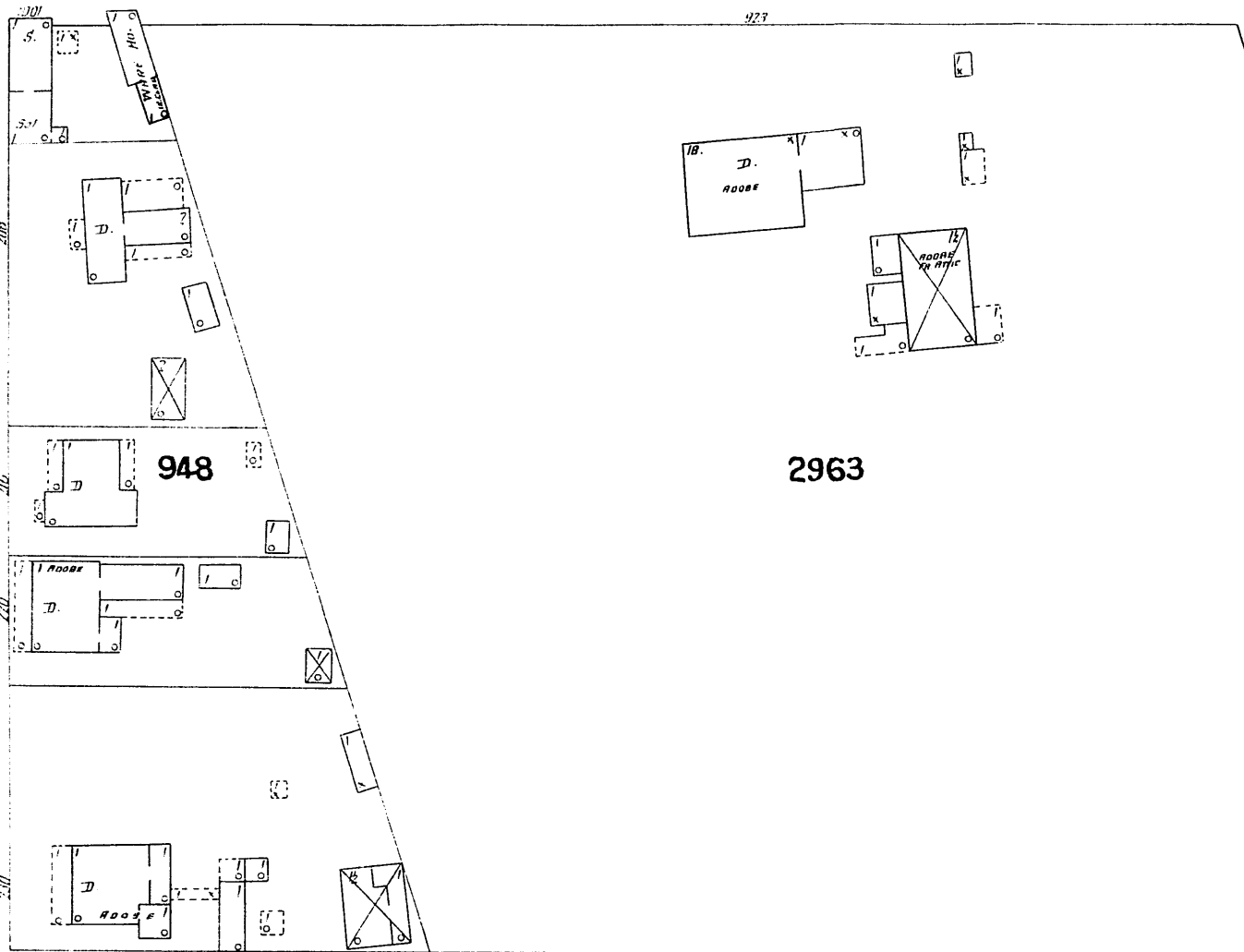
Google Maps 320 Cedar St



Imagery ©2021 Google, Map data ©2021 Google 20 ft

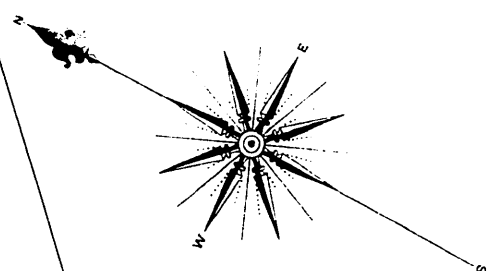
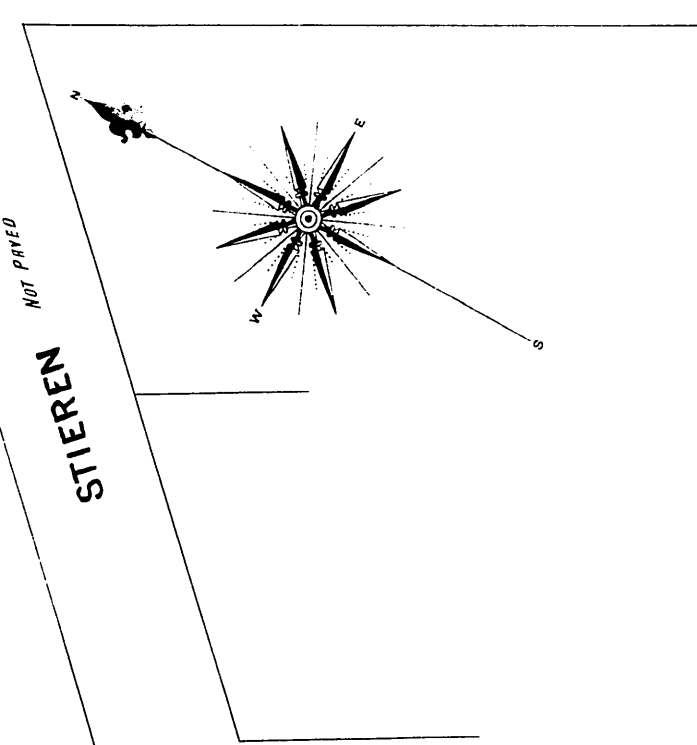
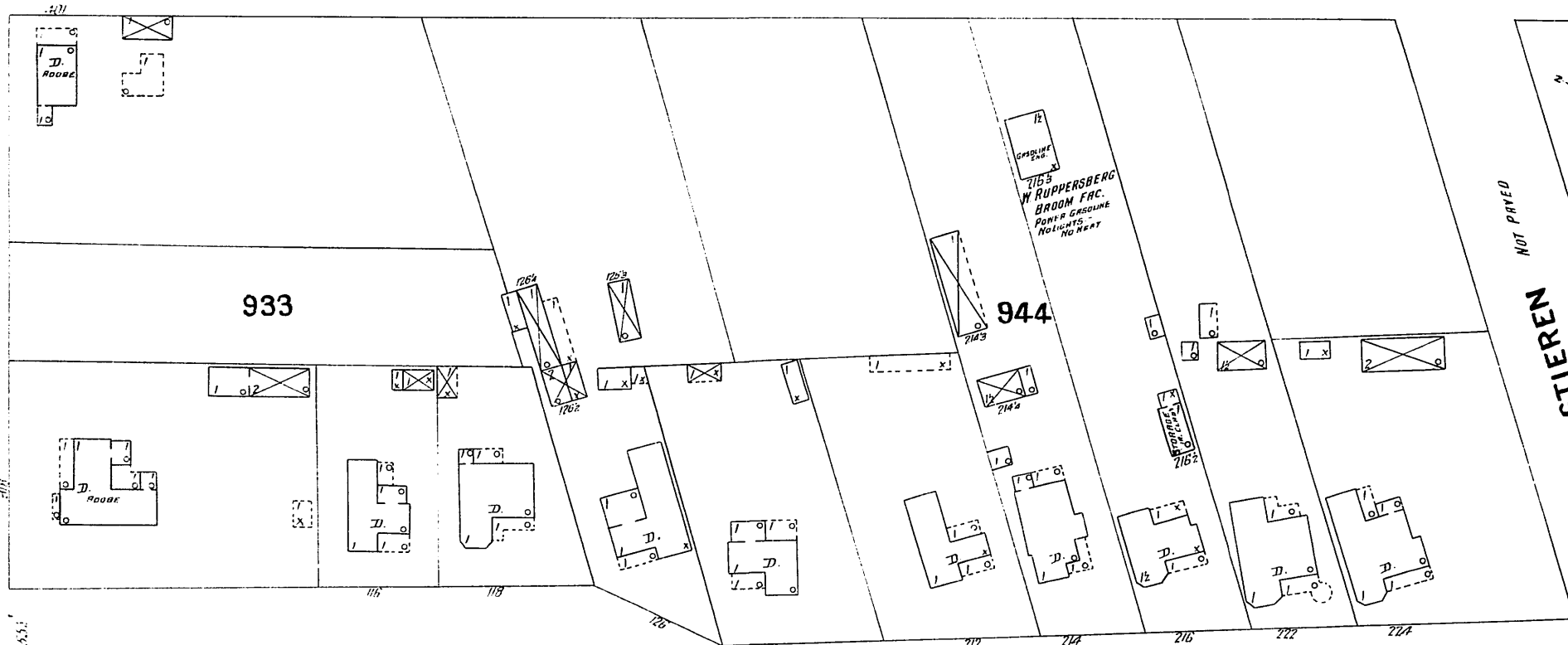
GARDEN ASPHALT PAVED

22



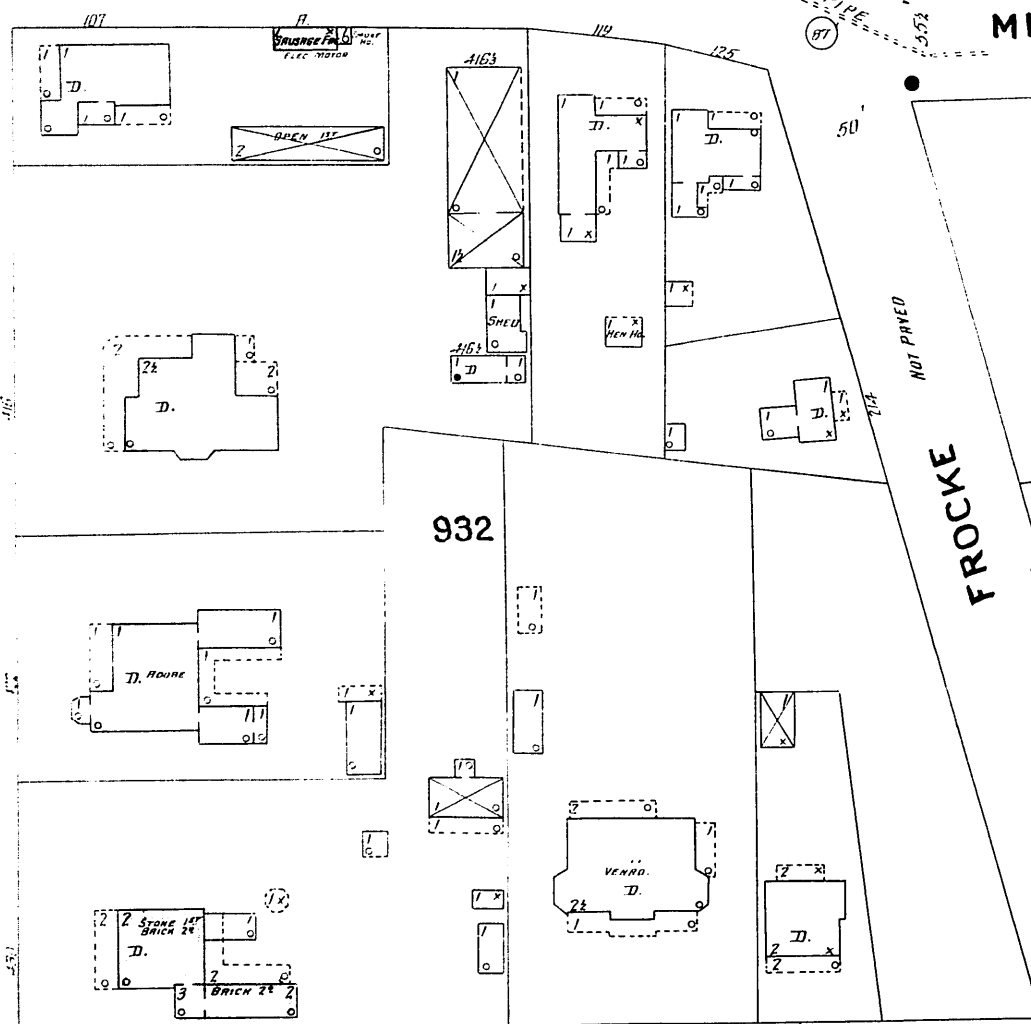
FIR 25

CEDAR NOT PAVED



MISSION MACADAMIZED

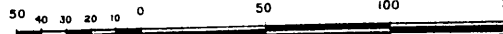
25



ADAMS

23

Scale of Feet.



357

1912

B E E U O I U E T h r E E

S. PRESA

GARDEN

CEDAR

MISSION

MISSION

360

351

361

35

358

